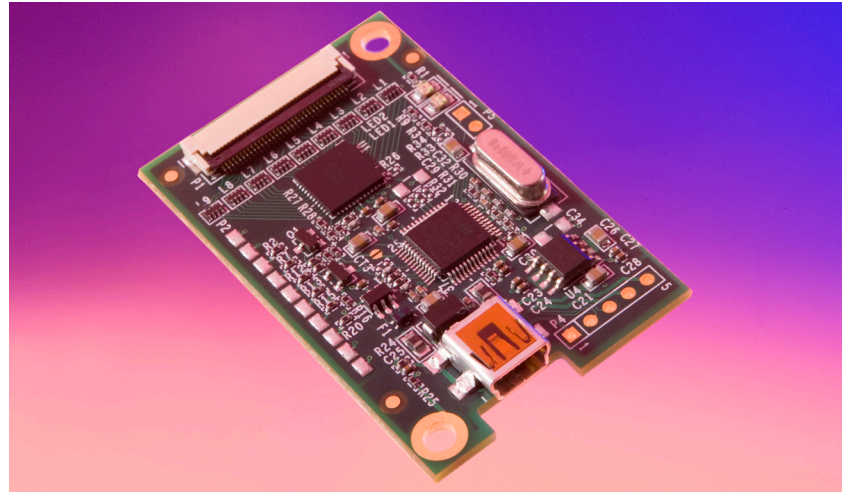


## ZXY100®

The ZXY100® is Zytronic's innovative touch sensor controller suitable for use with our award winning self-capacitive Projected Capacitive Technology (PCT™)

The ZXY100® controller range is designed to cover the full range of touch sensor sizes offered by Zytronic.



### ADVANTAGES

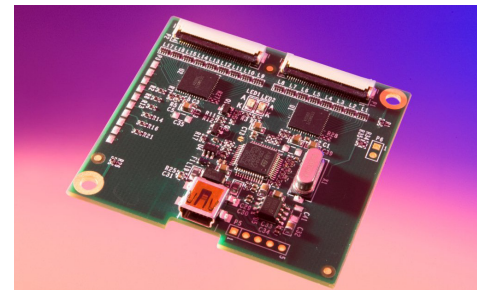
- Single touch and, when running the appropriate operating system, dual-touch performance
- Small footprint and chipset option to assist space saving designs
- ARM 32-bit Cortex microprocessor enables rapid touch detection (~1ms output)
- Firmware can be updated easily and remotely, latest Zytronic designed ASIC and firmware algorithms designed to optimise signal-to-noise levels
- Detachable and completely independent of touch sensors, helps servicing
- Output protocol available upon request
- Native driver support for Windows 7, 8 and Linux 3.5.1+ kernels
- Wide range of operating systems supported

### ZXY100®-U-OFF-32 / ZXY100®-S-OFF-32

USB or Serial versions suitable for sensors from 5" - 18"

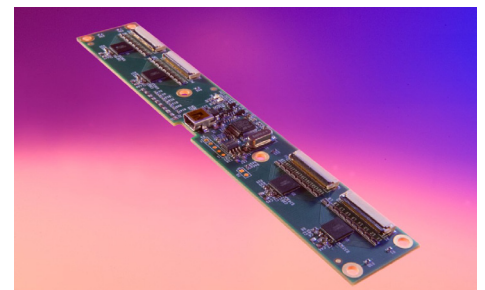
### ZXY100®-U-OFF-64 / ZXY100®-S-OFF-64

USB or Serial versions suitable for sensors from 19" - 47"



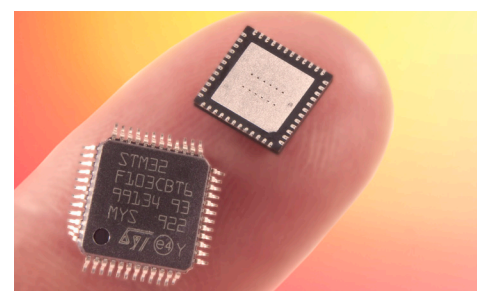
### ZXY100®-U-OFF-128 / ZXY100®-S-OFF-128

USB or Serial versions suitable for sensors >47"



### ZXY100 CHIPSET

In addition, subject to special agreement, Zytronic will supply the programmed ARM, ASICs and reference design files to enable customers to embed the controller onto a suitable existing motherboard within their system.



# ZXY100<sup>®</sup> Specification

## CONTROLLER

- X-Y co-ordinate update rate, 1mS (based on 32 input controller and 15" screen)
- Glass thickness operation 0.7mm-20mm
- Accuracy < 1mm (based on 32 input controller and 15" screen)
- On board voltage 3.3V and 4.7V
- Input voltage USB 5V; Serial 5V +/- 5%
- Current consumption 40 - 60mA
- Power consumption 0.2 - 0.3 Watts
- Supports sensors from 5" - 82"
- Controller recognised as HID device in Linux 3.5.1+ kernel, Win7 and 8 operating systems
- Drivers available for Linux, WinXP, and CE, plug-and-play with Win7 and 8 operating systems
- Controller output protocol available on request
- Driver source code available by special agreement

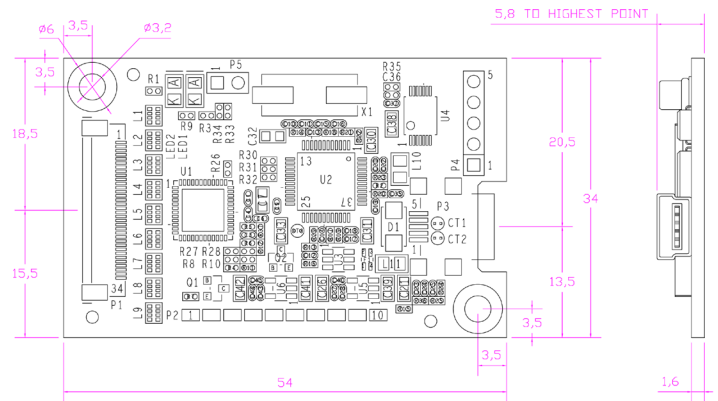
## APPROVALS

- RoHS compliant
- CE, FCC (class B) and UL approved  
- [www.zytronic.co.uk/support/quality-assurance](http://www.zytronic.co.uk/support/quality-assurance)

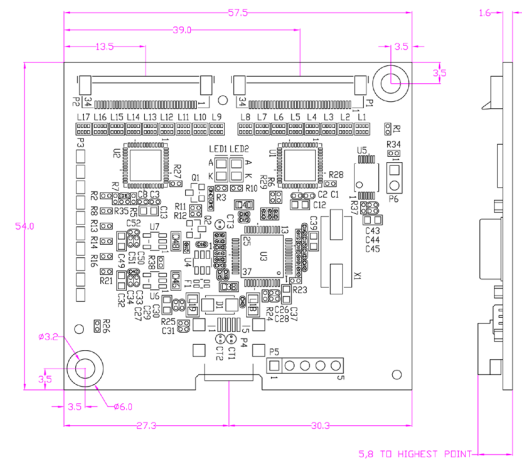
## ZXY100<sup>®</sup> DRAWINGS

(USB shown, Serial option also available)

Front View: ZXY100<sup>®</sup>-U-OFF-32



Front View: ZXY100<sup>®</sup>-U-OFF-64



Front View: ZXY100<sup>®</sup>-U-OFF-128

