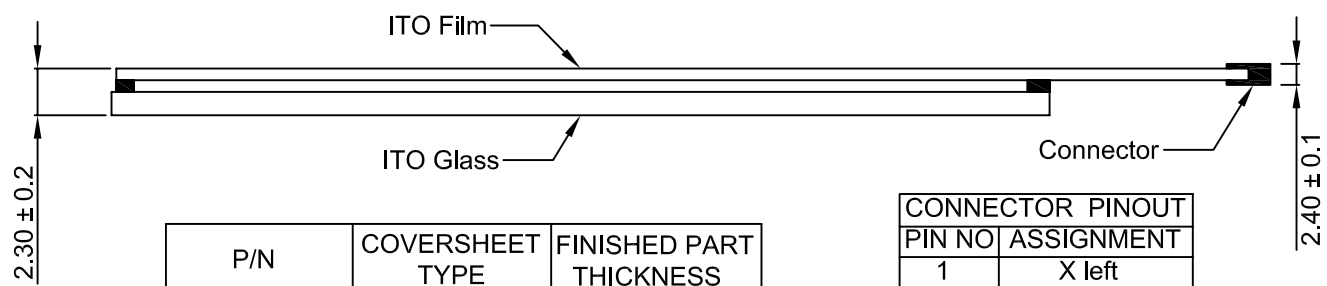
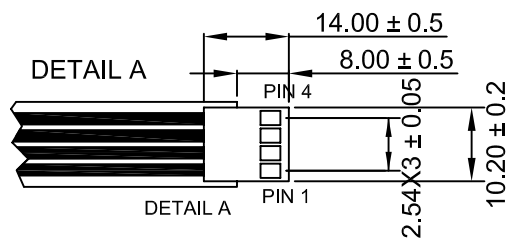


NOTE:
 1. CABLE IS ATTACHED TO THE RIGHT SIDE OF TOUCH PANEL AT CENTER POINT AS SHOWN.
 2. TAIL CONNECTOR: PITCH 2.54mm



P/N	COVERSHEET TYPE	FINISHED PART THICKNESS
4WR08423G1	CLEAR	2.3 ± 0.2
4WR08423N1	ANTI-GLARE	

CONNECTOR PINOUT	
PIN NO	ASSIGNMENT
1	X left
2	X right
3	Y down
4	Y up

宇鴻光電股份有限公司 ATouch Technologies Co., Ltd.		
MODEL NUMBER		4WR084-1
DRAWN BY	DIMENSION UNIT	ISSUE DATE
KEN JHUANG	mm	10 / 27 / 06
CHECKED BY	SCALE	REV
MELISSA WEI	NOT TO SCALE	B