

# USER'S MANUAL

## AOD/ATS 260 metal case monitor



Back with and without cover



### A1Touch Solution BV

Hogeweg 21  
NL-6367 BA Voerendaal  
The Netherlands

☎ : +31-(0)45 574 81 90  
📄 : +31-(0)45 574 81 91

✉ : [info@A1TouchSolution.nl](mailto:info@A1TouchSolution.nl)  
🌐 : [www.A1TouchSolution.nl](http://www.A1TouchSolution.nl)

# Contents:

## **1. Monitor User's Manual**

- 1.0. Connection to the monitor
- 1.1. Installation
- 1.2. Features
- 1.3. Plug and play function
- 1.4. Safety Precaution
- 1.5. OSD (On-Screen-Menu)
- 1.6. OSD Menu
- 1.7. Specifications
- 1.8. Contents of the retail package
- 1.9. Troubleshooting
- 1.10. Drawing

## **2. Touch options**

- 2.0. Touch options related to monitor size
- 2.1. SAW touchscreen
- 2.2. IR touchscreen

## **3. Software**

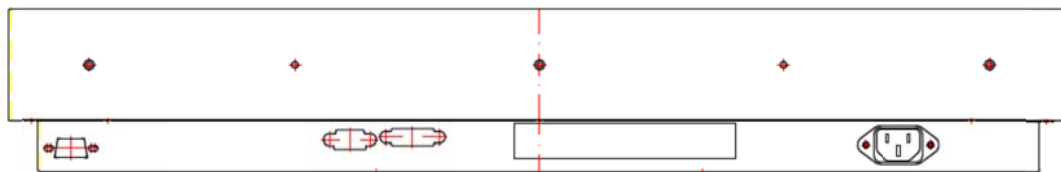
- 3.0. Touchkit
- 3.1. ELO

## **4. Mounting**

- 4.0. Overzicht
- 4.1. Plain
- 4.2. Wall mounting

# 1. Monitor User's Manual

## 1.0. Connection To the Monitor



Touch Interface  
Option: USB or Serial

VGA  
DVI - A/D

Power ( AC 220V )

## 1.1. Installation

- Connect the signal(VGA) cable to the VGA port of computer. Tighten the two thumbscrews by turning clockwise.
- You can adjust the connection for your PC environment.
- Plug the DC cord of the AC adapter to the power connector and the plug the end of AC adapter to and electrical outlet socket(110V/220V)
- Connect DC cord of adapter (12V DC) to the monitor..

## 1.2. Features

- AOD170 is 17" SXGA LCD monitor and support up to 75Hz.
- You can adjust brightness, contrast, horizontal & vertical positions by OSD menus and use auto adjust function for instant adjustment.
- High-qualified LCD Controller inside
- Compact space saving design and power saving mode
- 100% compatible with Windows PC environment without the installation of driver CD or software program.

## 1.3. Plug and Play Function

AOD170 can be installed and connected automatically to any computer systems without driver CD or software programs. Monitor will recognize the optimized value of video mode by DDC(Display Data Channel) method that makes the graphic card of computer to communicate with the monitor.

AOD170 supports VESA DDC 1/2B.

## 1.4. Safety Precaution

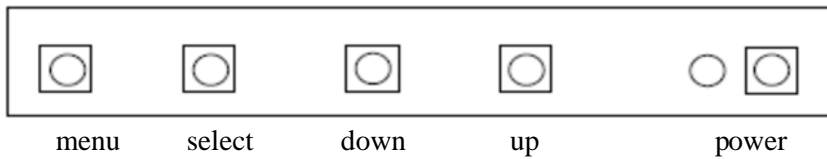
We strongly recommend that you carefully read this User's Manual before operating your LCD monitor. FOLLOW INSTRUCTIONS in this manual.

Please read and comprehend all using directives before use this machine.

- **Power**  
Use the type of power indicated on the marking label.
- **Adapter**  
Only use an adapter designed of the LCD monitor.



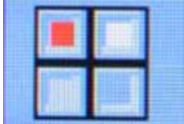

- **Plug**  
Do not remove any of the prongs of the monitor's three-pronged power plug.  
Disconnect the power plug from the AC outlet if you will not use it for an indefinite period of time.
- **Power and extension cord**  
Use the proper power cord with ground conductor  
Do not overload wall outlets or power cords. Ensure that the total of all units plugged into the wall outlet does not exceed 7 amperes.  
Do not allow anything to rest on the power cord. Do not locate this product where persons will walk on the cord.
- **Care and maintenance**  
Slots and openings in the cabinet are provided for ventilation. Do not block or cover these openings. Do not push objects of any kind into cabinet slots or openings. The screen surface is easily scratched. Do not use paper towels to clean the display. Avoid touching it with your fingers, pens, or pencils.  
Turn off the AC adapter and the monitor over long periods when not in use.

## 1.5. OSD (On-Screen-Menu)



Button	Function	Status
POWER	Power ON or OFF	ON/OFF
LED	Indicate working status	Green: On Red: Stand-by Orange: No signal
UP	Launch OSD Menu or add value	Move to OSD Menu
DOWN	Launch OSD Menu or add value	Move to OSD Menu
SELECT	Select OSD Menu	
MENU	On /Off OSD Menu	

## 1.6. OSD Menu

OSD Menu		Description	Remarks		
Picture 	Brightness	Adjust the brightness of the screen			
	Contrast	Adjust the contrast of the screen			
	H.Position	Adjust the horizontal position of the screen's image	Only usable on analog mode		
	V.Position	Adjust the vertical position of the screen's image			
	Phase	Adjust the focus of the screen's image			
	Clock	Adjust the horizontal size of the screen's image			
	Auto adjust	Automatically adjust the horizontal position, vertical position, horizontal size, and phase window's			
Color 	Color temp	User Reddish Bluish	Control the temperature of the color		
	Red		Control the intensity of the color of screen's image (usable when color temperature is USER mode.)	Only usable on analog mode	
	Green				
	Blue				
	Auto color		Adjust the color balance of the screen		
OSD 	Language	English French German Spanish Italian Korean Japanese	Select one of the seven language	Usable in all Mode.	
	OSD H. Posi.		Select OSD MENU horizontal position		
	OSD V. Posi.		Select OSD MENU vertical position		
	OSD Timer		OSD MENU disappear from over the screen after setting time		
	Transparency		Adjust the transparency of the OSD menu		
Misc. 	Language	English French German Spanish Korean	Select one of the five language	Usable in all Mode.	
	Recall		Initialize the current mode & setting value		
	Input select	Analog			Analog signal (RGB)
		Digital			DVI digital signal
	Audio		Audio ON/Off select		
Volume		Adjust volume level			

## 1.7. Specifications

### Monitor:

<b>Afmetingen scherm</b>	26.0 inch / 660.87 mm diagonaal
<b>Beeldscherm</b>	TFT active matrix LCD
<b>Merk / Type</b>	LG-Phillips / LC260WUE
<b>Resolutie</b>	FULL HD 1920 x 1080 WUXGA
<b>Pixel Pitch</b>	0.3 mm x 0.3 mm
<b>Kleur diepte</b>	10-bit (D), 1.06 B kleuren
<b>Responstijd</b>	8ms typ.
<b>Beeldhoek (L/R &amp; U/D)</b>	89°/89° & 89°/89°
<b>LCD monitor lichtsterkte</b>	400 cd/m <sup>2</sup>
<b>Contrast ratio</b>	1000 : 1
<b>Gebruikersknoppen (aan achterzijde bereikbaar)</b>	Vertical position, OSD Menu position, Manual Setup, Language Select, Information, Horizontal position, Factory Default, Color, Brightness/contrast, Auto setup

### Computer:

<b>Type computerboard</b>	OPTIE: Vraag hiernaar !! Avalue ECM-945GSE, 3.5" Intel 945GSE Atom N270 Micro Module
<b>Processor</b>	Intel Atom processor N270 1.6 Ghz CPU
<b>Chipset</b>	Intel 945GSE / ICH7-M
<b>Bios</b>	Award 8 Mbit Flash BIOS
<b>Memory</b>	One 200 pin SODIMM socket support up to 2 GB DDR2 400/533/667 MHz SDRAM
<b>Flashmodule/ Harddisk</b>	160 Gb SATA Harddisk (standaard) of 64 Gb SSD SATA Harddisk (optie).
<b>Display Chipset</b>	Integrated Intel 945GSE
<b>Display Memory</b>	Intel DVMT 3.0 Supports up to 224 MB Shared Video Memory
<b>Toetsenbord/muis</b>	Optioneel, USB, draadloze muis/toetsenbord.
<b>LAN (RJ-45)</b>	(2x) Dual LAN, Marvell 88E8053 Gigabit Ethernet (1000 Base-Tx Gigabit Ethernet Compatible)
<b>Audio</b>	Intel ICH7-M Chipset Realtek ALC655 supports 5.1 CH Audio, Mic-in, Line-out, Line-in..
<b>IDE</b>	1 Ultra DMA 133/100/66 connector (2.0mm 44-pin head).
<b>Hardware Monitor &amp; Power Management</b>	Fan control, CPU voltage monitoring, AC power failure recovery, System power management, Wake-on-Lan, Keyboard-power-on, Timer-power-on, Watch-dog timer.
<b>Besturingssysteem</b>	Windows XP, Linux.
<b>Interne nog niet gebruikte aansluitmogelijkheden:</b>	1x USB pin connectors voor 4 additionele USB 2.0 poorten 1x Sata 1x EIDE 1x RS-232 1x RS-232/422/485 1x LVDS
<b>Aan achterzijde systeem (Bereikbaar na verwijderen deksel):</b>	2 x USB 2.0 1 x RS232 COM Poort 2 x RJ45 LAN poort 100/1000Mb Ethernet (internet aansluitingen) 1x Mic-in, 1x Line-out, 1x Line-in (Optie) 1x VGA-in (bezet) 1x DVI-in 1x Aan/Uit schakelaar hoofdspinning (Optie)

### Behuizing:

<b>Dichtheidsgraad voorzijde</b>	standaard IP54 (stofdichte voorzijde); OPTIE: waterdichte voorzijde (IP65)
<b>Materiaal</b>	volledig metalen behuizing, zwart gepoedercoat
<b>Afmetingen systeem (B x H x D)</b>	650x388x99 mm
<b>Ophanging</b>	Vesa 200
<b>Gewicht</b>	16 Kg
<b>Stroomverbruik</b>	50W normaal gebruik; 110W max.; 5W stand by.
<b>Voeding</b>	110 - 220V AC - In. 242 W max vermogen. (Interne voeding) 96 W bij normaal gebruik 35 W (stand by)

## 1.8. Contents of the Retail Package



Monitor



Power cord



VGA Cable



DVI Cable



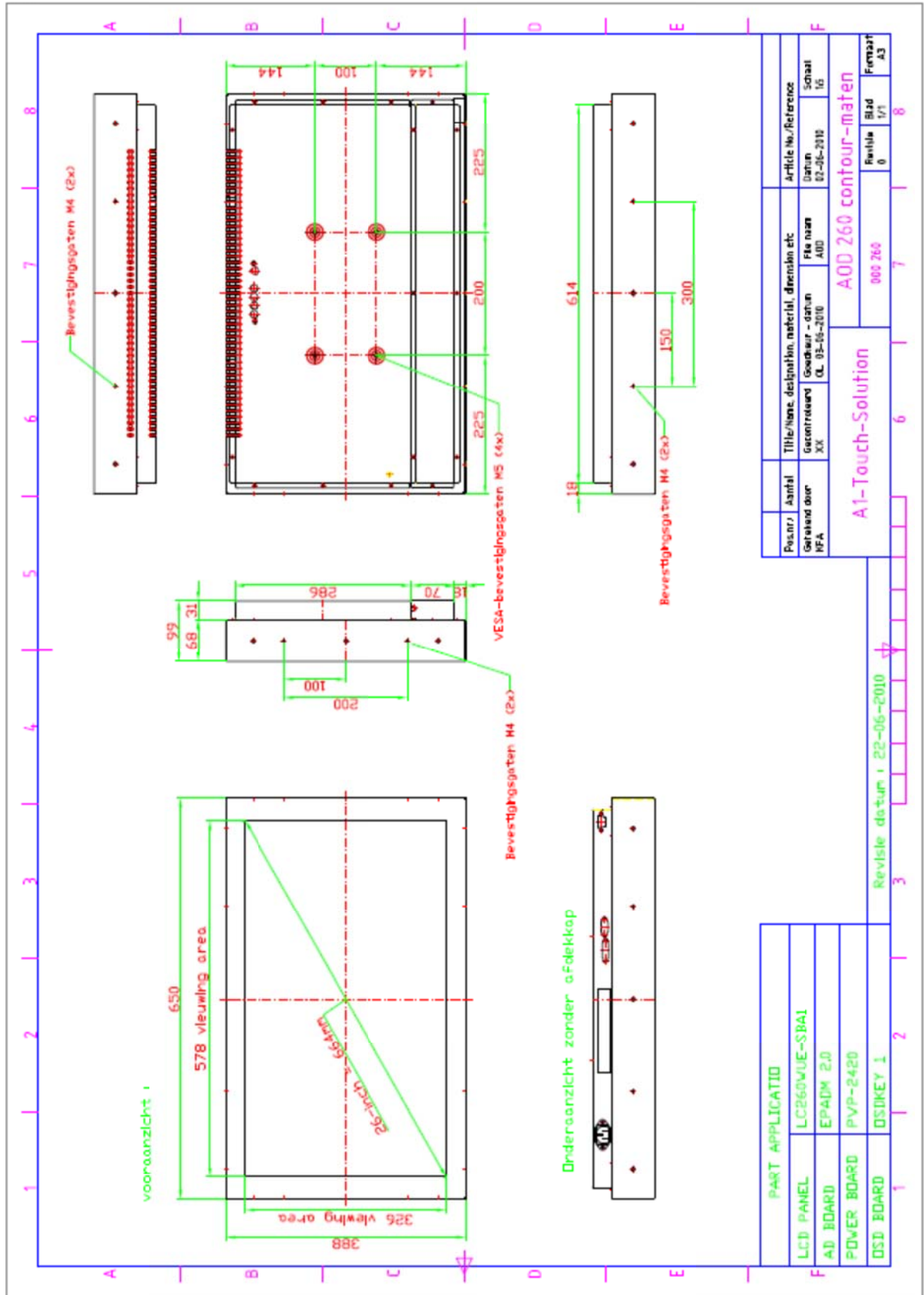
Touch Driver (option)

## 1.9. Troubleshooting

TO REDUCE THE RISK OF ELECTRIC SHOCK, DO NOT REMOVE COVER.  
NO USER-SERVICEABLE PARTS INSIDE.  
REFER SERVICING TO QUALIFIED SERVICE PERSONNEL.

- The monitor does not respond after you turn on the system.
- Make sure that the monitor is turned on.
- Turn off the power and check the monitor's power cord, AC adapter, and signal cable for proper connection.
- Appear the " No Input the Signal"
- Check the connecting of the audio cable between the monitor and the computer.
- Appear the " Input Not the Supported"
- Input signal are insuperable, reset the video mode.
- The appearance is not at the screen center.
- Use "AUTO ADJUST", refer to the Controls section.
- The characters on the screen are too dim or too bright
- Choose fit color temperature, use "AUTO COLOUR ADJUST or manually adjust
- "RGB ADJUSTMENT, refer to the Control section.

# 1.10. Drawing



Posnr	Aantal	Titel/Name, designation, material, dimension etc	Article No./Reference
Gerelateerd door	Gecontroleerd door	Goedgekeurd - datum	File naam
NFA	XX	OL 03-05-2010	ADD
<b>A1-Touch-Solution</b>			<b>ADD 260 contour-maten</b>
			Revisie Blad
			0 1/1
			000 260
			7
			8
			Fernaat
			A3

PART APPLICATION	
LCD PANEL	LC260VUE-SBA1
AD BOARD	EPADM 2.0
POWER BOARD	PVP-2420
DSD BOARD	DSIDKEY 1

Revisie datum : 22-06-2010



## 2. Touch Options

### 2.0. Touch-options related to monitor size

	4Wire	5Wire	SAW			CAP		PROJ. CAP	IR	Optical Touch
			3mm	6mm	protected	3mm	6mm			
070W	O	S	S	X	X	X	X	X	X	X
104	O	O	O	O	X	O	X	X	S	X
121	O	O	O	O	X	O	X	X	S	X
150	O	O	O	O	O	O	X	X	S	X
170	X	O	O	O	O	O	S	O	S	X
190	X	O	O	O	X	O	X	O	S	X
220W	X	X	X	X	X	X	X	X	X	O
<b>260</b>	<b>X</b>	<b>X</b>	<b>X</b>	<b>O</b>	<b>X</b>	<b>X</b>	<b>X</b>	<b>X</b>	<b>O</b>	<b>X</b>
320	X	X	X	O	X	X	X	X	O	O
420	X	X	X	O	X	X	X	X	O	O

Aviable       Not aviable       On demand

### 2.1. Option: SAW-Touchscreen

**SAW-touchscreen** standard  
tempered option

3mm glass with beveled edge  
Break resistance, meets UL-1950, by  
6mm heat tempered glass (is option)

protected option

break resistance, dustproof, waterproof (is option)

**Chemical resistance**

Acetone, ammoniabased isopropyl alcohol,  
turpentine, methy cleaners alcohol, methyl ethyl  
ketone, toluene, gasoline, kerosine, vinegar.

**Electrostatic discharge protection**

pr EN 61000-4-2, 1995: meets level 4 (15 kV air /8kV  
contact discharges)

**Activation force**

less then 85gr

**Position accuracy**

Standard deviation of error is less then ±1%

**Life performance**

>50.000.000 (finger)

**Input modus**

Finger or glove hand (rubber, cloth, leather)

**Surface durability**

Optical glass surface, Mohs' hardness rating : 7  
90% (per ASTM D1003)

**Light transmission**

**SAW-controller**

**Supply voltage**

+5V DC(±5%)

**Supply current**

Min 85mA ~ Max 150mA

**Electrostatic protection**

prEN 61000-4-2, 1995: Meets level 4 (15kV lucht /  
8kV contact discharges)

**Interface -standard  
-option**

USB 'plug-and-play' compatible  
RS232 with PS/2 connector, is option

-option

RS232 internal powered. is option

**Touch resolution**

4096x4096

**Conversion time**

~15ms per coordinate set

**Reliability**

MTBF greater than 300.000 hours

**Support operating system**

Microsoft Windows:  
95/98/ME/NT4.0/2000/XP/Vista/7  
Mac OS 9.X, 10.X, Mac Intel  
Linux: Red Hat 9.0, Mandrake 10.0,  
SuSE 9.2, Fedora Corel &II &III, Yellow  
Dog 3.x, Kernel 2.4.X,  
Kernel 2.6.X: 32 en 64 bits

## 2.2. Option: IR-touchscreen

### IR-touchscreen

#### Chemical resistance

Acetone, ammonia-based glass cleaners, isopropyl alcohol, turpentine, methyl alcohol, methyl ethyl ketone, toluene, gasoline, kerosene, vinegar

#### Touch activation force

no minimum touch activation is required  
everything bigger than 6,5 (W) x 6,5 (H)

#### Input modus

∞

#### Life performance

#### Supply voltage

+5V DC(±5%)

#### Supply current

~ 150mA

#### Interface standard

RS232 baud rate: 9600, 8 data bits, 1 stop bit, no parity, full duplex

#### Electrostatic discharge protection

prEN 61000-4-2, 1995: meets Level 4 (15kV air / 8kV contact discharges)

#### Touchpoint density

Based on controller resolution, up to 4096x4096

#### Light transmission

Over 90% (per ASTM1003)

#### Conversion time

less than 20 ms

#### Support operating system

Microsoft Windows: NT4.0/XP/Vista/7/2000/ME/98/95  
Linux: Red Hat 9.0, Mandrake 9.1

## Interface



USB (standard)



RS232 with PS/2

## 3. Touch Options

### 3.0. Touchkit

Features for <i>Touchkit</i> software	
Calibration	Fast full oriental 4 points position
Compensation	Accuracy 25 points linearity compensation.
Draw Test	Position and linearity verification
Extend Feature	<ol style="list-style-type: none"><li>1. Support monitor / display rotation</li><li>2. Support multiple monitor / display</li><li>3. Support QVGA and Half-VGA function</li><li>4. Support edge compensation</li></ol>
Controller Setting	<ol style="list-style-type: none"><li>1. Support multiple controllers</li><li>2. Dynamical add / remove controllers</li><li>3. Change Controller interface without reboot.</li></ol>
Language	Support 10 languages for Windows
Mouse Emulator	<ol style="list-style-type: none"><li>1. Right / Left button emulation</li><li>2. Normal / Click on touch / Click on release mode</li><li>3. Auto right button</li></ol>
Sound Notification	<ol style="list-style-type: none"><li>1. Sound Option ( No Sound / Touch Down / Lift Up )</li><li>2. Frequency adjustment</li><li>3. Duration adjustment</li></ol>
Double Click	<ol style="list-style-type: none"><li>1. Configurable double click speed</li><li>2. Configurable double click area</li></ol>
OS support	<ol style="list-style-type: none"><li>1. Windows 95 / 98 / ME / NT4 / 2000 / XP / Vista Windows XP Tablet PC Edition</li><li>2. Windows CE 2.12, 3.0, 5.0, 6.0 .NET</li><li>3. Linux ( X Window Version: 3, 4 Red Hat 6.0 ~ 9.0 Mandrake 5.0 ~ 9.1 , Kernel 2.4.X Kernel 2.6.X, 32 en 64 bits )</li><li>4. iMac. OSX, OS9.X, OS10.X, Intel</li><li>5. MS-DOS: Support display resolution: 320x200, 640x200, 640x350, 640x480, 800x600, 1024x768 and 1280x1024</li></ol>
COM port support	<ol style="list-style-type: none"><li>1. Support COM 1 ~ COM 256 for Windows and Linux</li><li>2. Support COM 1 ~ COM 8 for DOS</li></ol>

### 3.1. ELO

By adding a jumper to the A-Touch controller, the whole system becomes ELO-compatible. The touch registration will be realised by ELO-drivers.

There are several reasons for doing this:

- You are already using application software with “build-in” ELO drivers.
- You are using clients with pre-installed ELO-drivers.
- You replace an original ELO-touch screen with an A1-touchscreen.

Then benefit is; you don't have to install new software in the above mentioned situation.

Remark:

If you want to change your driver software from touchkit to ELO, or the other way around, you have to de-install the old software completely before installing the new software.

## 4. Mounting

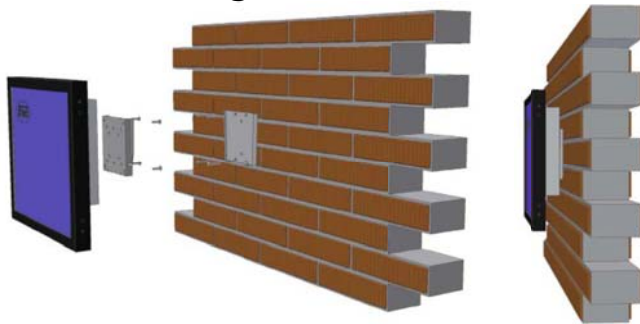
### 4.0. Overzicht

#### 4.1. Plain



Metal case monitor

#### 4.2. Wall mounting



Metal case monitor + New Star TV Wallmount (FPMA-W110)